

SAXDOR|320|GTC



*The ultimate all-weather machine*

# SAXDOR | 320 | GTC

## *The ultimate all-weather machine*

Saxdor Yachts introduces the latest model in its 320 range, the GTC. This 33ft 8in (10.3m) cabin cruiser, which uses the same twin-stepped hull and engine line-up as the previously announced 320 GTO, offers year-round usability thanks to its fully enclosed wheelhouse with sliding roof and multi-function aft doors with a section that drops down into the deck.



The doors are a key component aboard the GTC as they allow the cabin to be sealed off from the elements entirely or open it up to the cockpit to create one large indoor/outdoor living space. The standard fit sunroof and folding terraces add to the GTC's market-leading flexibility and help create a true multi-purpose cruiser.

Sakari Mattila, founder of Saxdor Yachts, says: "The 320 GTO has proved extremely popular with customers even from the drawing board and we have over 300 orders for this model already. The 320 GTC is the next step in our development of this range and it offers total flexibility in all conditions."



## *Drivability like no other*

Low center of gravity, low weight, sharp entry, and a twin stepped hull create a unique driving experience in all kinds of seas and weathers across the world.

The Saxdor 320 GTC comes with a three-engine option, with horse powers from 300 hp to 600 hp. You can either choose the one-engine option with a competitive price and low fuel consumption and keep a comfortable driving experience, or you can choose the powerful twin-engine option 2 x 225 hp or 2 x 300 hp - the Grand Tourismos of the seas.





## Specification

Beam: 3,10 m

---

Overall Length :10,28 m

---

Passengers: 8 persons

---

Fuel Capacity: 450 liters

---

Max engine power: 600 hp

---

Max speed range: 45kts

---

Fresh water capacity : 100 liters

---

Black water capacity : 60 liters

---

Grey water capacity: 40 liters

---

Classification: ISO Cat. C, ABYC

---

Construction:GRP

---

Max load: 1950 kg

Max draught: 0,94m (3,084 ft)

---

\*Optional packages





*The starting price with a single 300 hp Mercury V8 outboard is 106 810 €\*. For more information and to secure your boat contact your local Saxdor dealer.*

*\*excl. VAT and other applicable taxes and costs such as handling, freight and delivery.*



## *Freedom to move*

Saxdor 320 GTC changes the game of movement on board. With its completely unique concept of a full beam spacious pilot house with easy access to the walk-around bow, movement onboard has never been this easy.

Saxdor believes in the luxury of unused space. By eliminating the side decks from the main deck the wheelhouse is significantly more spacious than key rivals', creating space for a four-person dinette, wet bar and driver-focussed helm station on the starboard side.

Access to the foredeck, which features sunken walkways and a double sun pad, is via a door at the forward end of the wheelhouse, adjacent to the companionway hatch that leads to the lower deck. The aft deck, well protected by the cabin structure, is fitted with a dinette and, in another first for the sector, comes with folding terraces on either side, boosting cockpit space at the touch of a button when the boat is at rest.











NOMINATED 2022







## *Living on board*

Everything has been thoroughly thought through when it comes to living on board.

With a **large and spacious wheelhouse** people can easily walk on the wide corridors while you at the same time can cook for your family and friends. Since we feel that silence is gold, the wheelhouse can be equipped with isolation floating floors, especially developed for Saxdor 320 GTC model.

**The stylish kitchen module** comes with both a sink and a stove, and there is even space for two fridges if you would like to. There is also a nice dinette fitting up to five people and with the aft terrace you can fit in three more people for bigger parties. The dinette is easily changed with an electric operated table to bed for two people.

**The big canvas sunroof** is electrically operated, which makes it easy and smooth to control while driving. Two side opening large windows on both sides are also optional.

**The cockpit** is well designed with excellent ergonomics and the driver-focused helm station is equipped with mobile charger platform for easy charging.

**The lower deck** is bursting with natural light thanks to the two big Lewmar hatches in the coach roof. The hatches can be equipped with a sunshade and a mosquito net. The large and comfortable bed can be equipped with an ergonomic mattress base. And the spacious toilet in the lower deck closes with smart folding door.

The access to the **foredeck** features sunken and safe walkways and a double sun pad, is via a door at the forward end of the wheelhouse. Access to the aft deck from wheelhouse is easy through a big sliding glass door. **Aft deck** is a large open area that can be furnished with sofa and big table.

Enjoy your own beach house with electric folding terraces on either side of aft deck!





















# SAXDOR | 320 | GTC

## Technical information & Equipments

### STANDARD

- Electric opening side terraces
- Aft sunbed with sliding backrest facing aft-bow, storage underneath
- Sun deck in front”
- Wet-bar module
- Integrated handrails on deck”
- Fixed side wings for easy side boarding”
- Telescopic bathing ladder”
- Hatches on front deck for easy access”
- 2 x Flush mounted hatches”
- Handles and cleats”
- Quick fender release system”
- Anti-skid finishing on decks and hatches”

### TECHNOLOGY

- Power steering with adjustable steering wheel
- Mercury VesselView Mobile
- Mercury Active-Trim
- Wireless charging and 12V outlets
- LED Navigation lights
- Bilge pumps, electric and manual
- Fixed fuel tank with sensor
- Fire extinguisher storage with fire port

### COMFORT

- Extendable table with adjustable height
- Comfort and reading lights
- Front cabin comfort mattresses
- Carpets in front cabin
- LED interior lights
- Toilet with sea water flush and black water tank
- Mirror in front cabin
- Front deck and wet bar cup holders
- Hull stickers
- Leather steering wheel
- Cup holders in console and for passengers
- Glass holders on console
- Roof vents in front cabin
- Horn
- Saxdor documentation bag

And optional packages (view price list or visit [www.saxdor.com](http://www.saxdor.com))

### ENGINES



**Mercury V8 AMS 300hp**  
Verado outboards provide sensational power from a rock-solid V8 4.6-litre powerhead that delivers exhilarating acceleration and top speed.



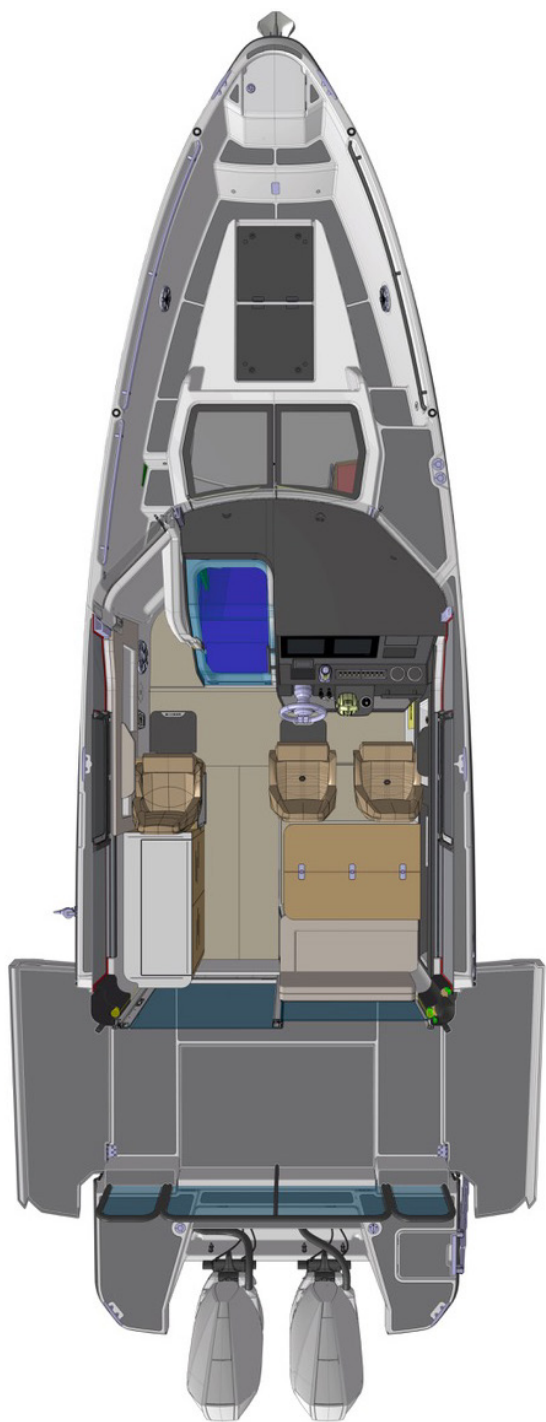
**Twin Mercury V6 CMS 225hp**  
The V-6 Mercury® FourStroke is high tech without high stress – reliable, durable, and strong.



**Twin Mercury V8 AMS 300hp**  
Verado outboards provide sensational power from a rock-solid V8 4.6-litre powerhead that delivers exhilarating acceleration and top speed.



# Layouts



Aft terrace dinette with side terraces  
open



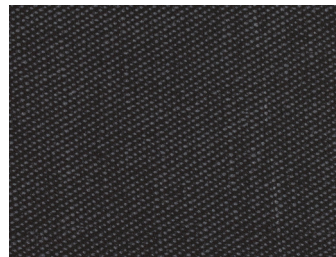
Open aft terrace with side terraces

# *Design selections*

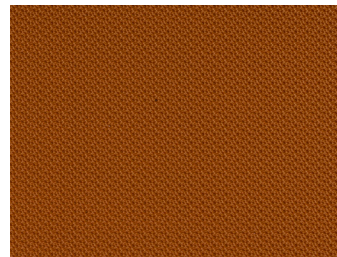
**Standard design package with basic white hull**



Seats and upholstery



Sandstone Gravel

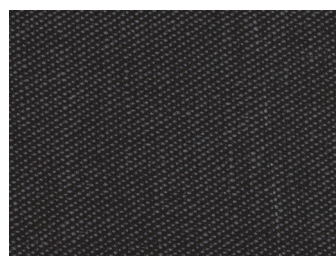


Silververtex Cobre

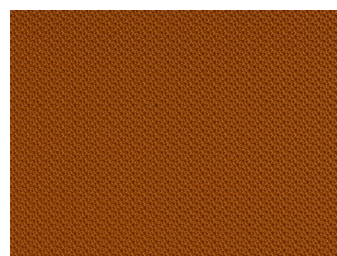
**Cobre design package with satin white aluminum hull foil**



Seats and upholstery



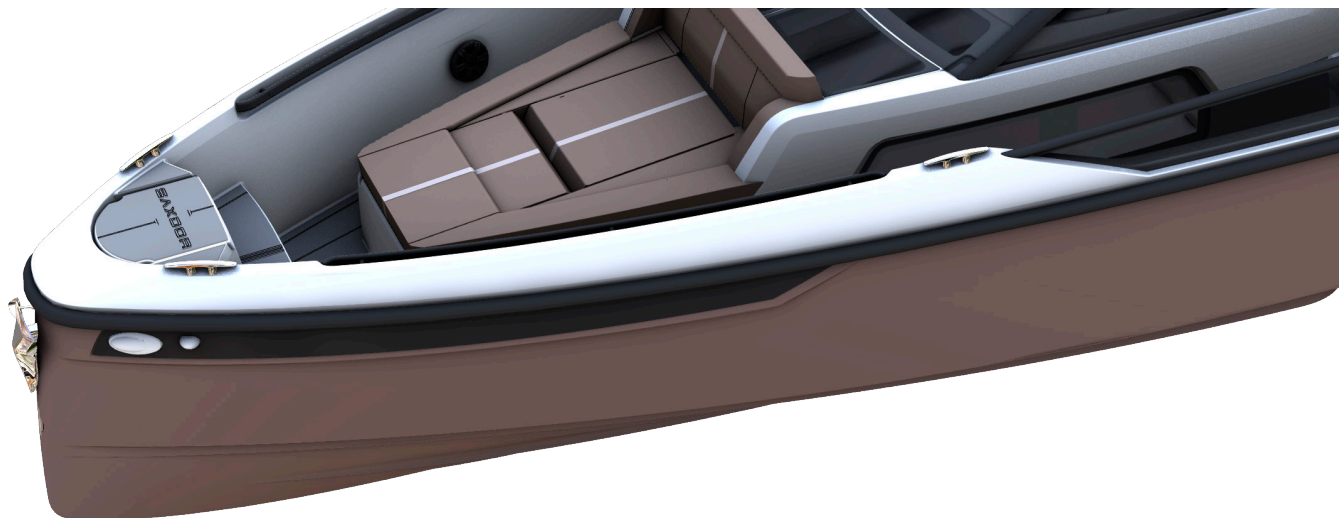
Sandstone Gravel



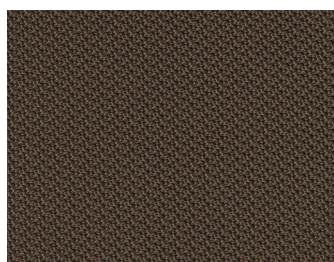
Silververtex Cobre

# Design selections

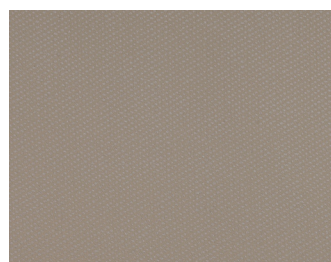
## Sand design package with matte brown metallic hull foil



Seats and upholstery

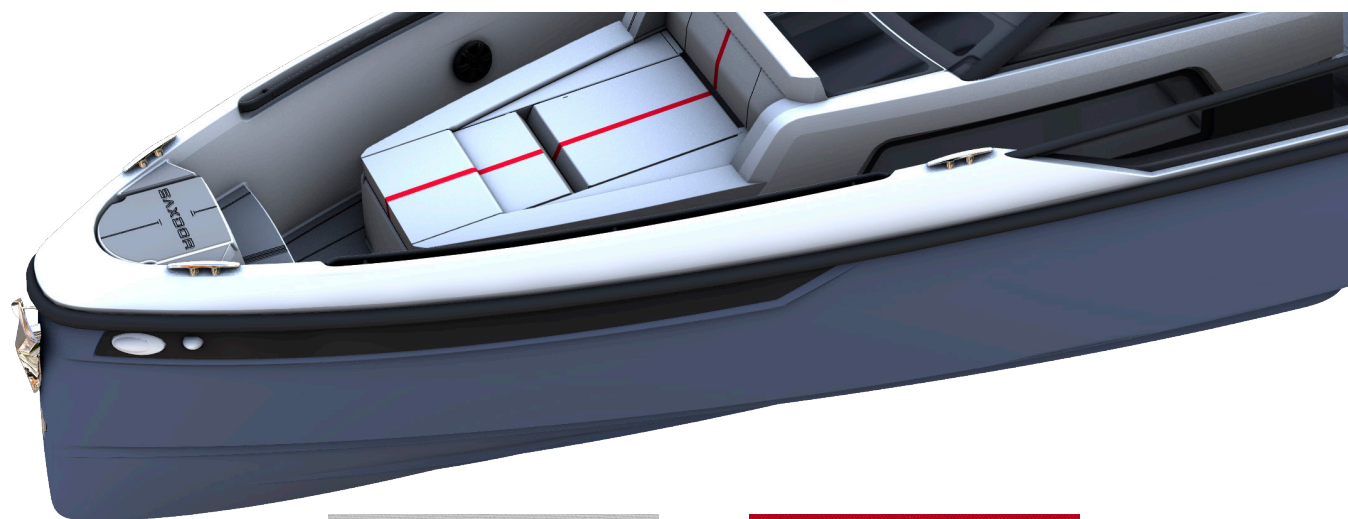


Hitch Neutra

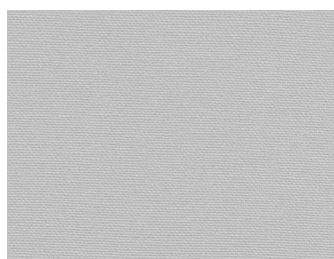


Sandstone Oyster

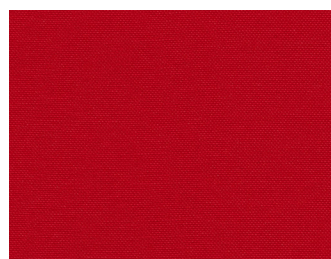
## Red line design package with grey hull foil



Seats and upholstery



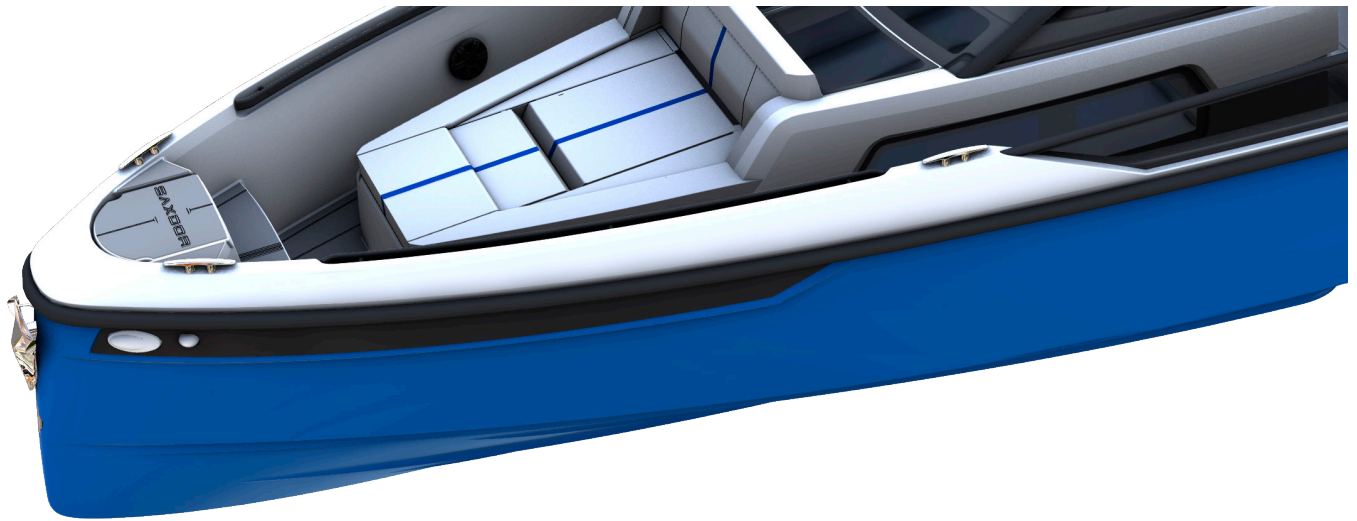
Silvertex Aluminium



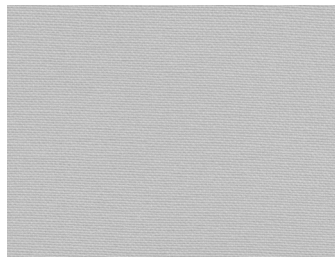
Silvertex Grenadine

# *Design selections*

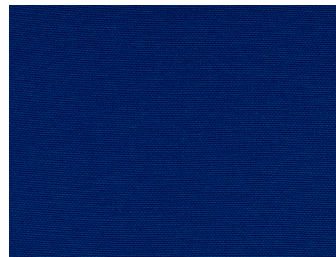
**Blue line design package with matte slate blue metallic hull foil**



Seats and upholstery



Silvertex Aluminium



Silvertex Delft

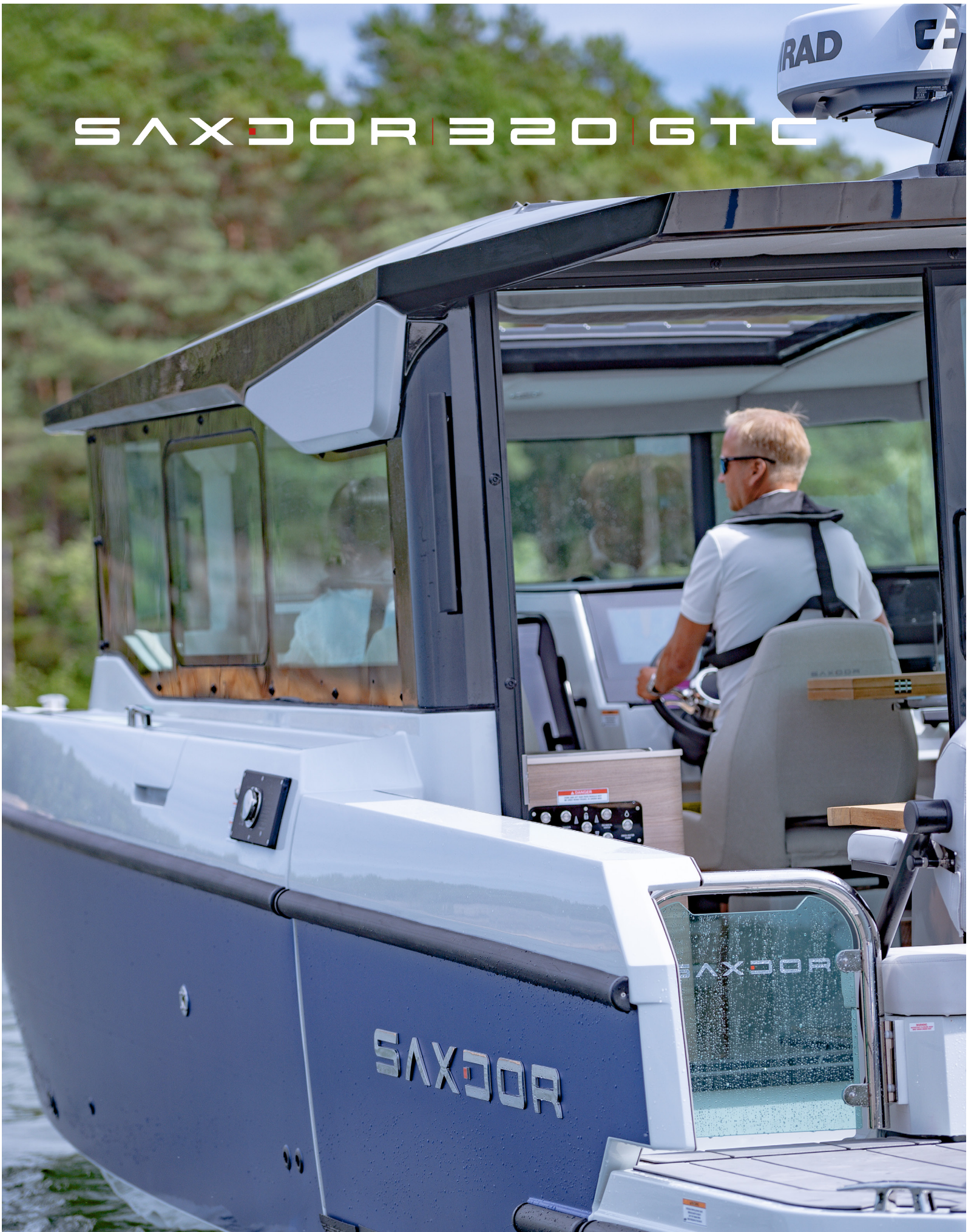




Watch 360 virtual tour at [www.saxdor.com](http://www.saxdor.com)  
or scan the QR code



# SAXDOR | 320 | GTC



FIND OUR DEALERS AT : [WWW.SAXDOR.COM](http://WWW.SAXDOR.COM)

**SAXDOR**  
YACHTS